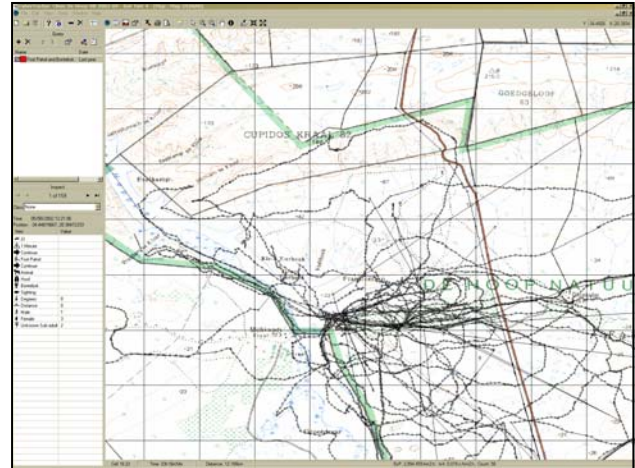


# CyberTracker Software

**CyberTracker** is the most efficient way to gather large quantities of geo-referenced data for field observations, even by non-literate users, at a level of detail not possible before.

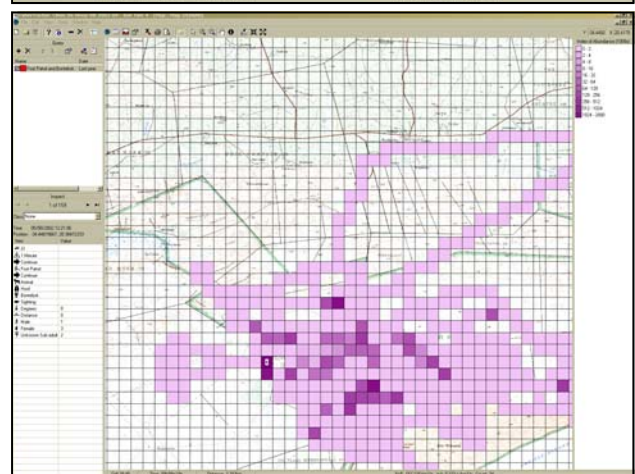
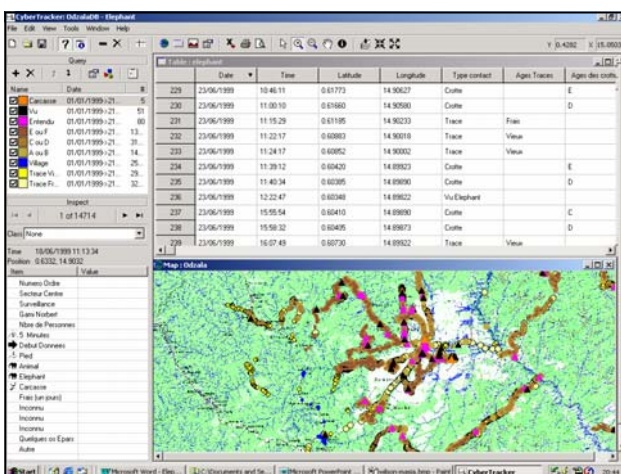
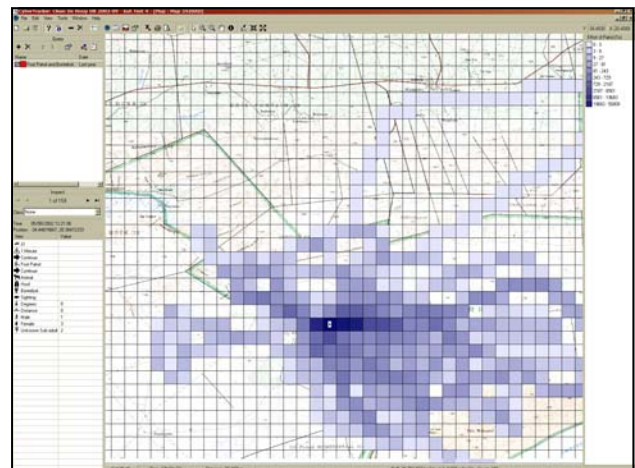


The **CyberTracker field computer** is designed to be quick and easy to use in the field. A user-friendly interface developed for PalmOS handheld computers allows field workers to record hundreds of detailed observations per day. The handheld computer can also be linked to a GPS.



The **CyberTracker software** allows users with no programming skills to:

- **Design and edit a database**
- **Customise screen sequences** using the Screen Writer feature
- **Gather geo-referenced data** with the CyberTracker field computer
- **View data** with the CyberTracker Geographic Information System
- **Analyse data** by calculating Patrol Efficiency, Effort of Patrol and Index of Abundance.
- **Export data** for advanced analysis, e.g. to Excel or ArcView



The **CyberTracker website** also provides detailed user guides, technical support via a membership discussion group and an overview of key projects. It also provides an opportunity for users to showcase their work and encourages the sharing of experience and ideas.

**Data Analysis:** The CyberTracker uses GPS Timer points to plot the path of a patrol (top), and to calculate the Effort of Patrol (middle) and the Index of Abundance (bottom).